



Update

March 13, 2019

LWEA Equity 4 All Conference



Developing student-focused strategies to close the achievement gap and increase student academic success.



Register Today!

Saturday, March 23

8:00 AM – 3:30 PM

International Community School
11133 Northeast 65th Street, Kirkland

Participants will engage in meaningful learning opportunities and examine practices in schools and classrooms for the purpose of developing student-focused strategies to close the achievement gap and increase student academic success. Examples of 2019 LWEA Equity for All Conference topics include the following: Understanding the Diverse Cultures of our Community, Institutional Racism and Implicit Bias; Developing Culturally Responsive Strategies for the Classroom; Techniques for Infusing Restorative Justice Practices into the Classroom; and Ways to Meet the Needs of All Learners.

See [flyer](#) for more information and Registration Link

**In
this
issue**



- Snow Day Make-Up (2)
- Music & Arts Grants (2)

- Answers to Contract Questions (3)
- Levy (3)

SNOW DAY MAKE-UP

The 2018-19 calendar has been modified to reflect the following changes to account for snow make-up days. The changes meet all state requirements.

- **LEAP Wednesdays on May 1 and May 8:** will be changed from an early release to a full day for students
- **LEAP Friday, May 24:** will change from a non-school day to a school day for students
- **Snow Make Up Day Tuesday, May 28:** change from a non-school day to a school day for students
- **Thursday, June 13:** will replace June 12 as the due date for elementary grades
- **Wednesday, June 19:** will change from ½ day to a full day for staff and students
- **Thursday, June 20:** is added as a half day for students (last day of school) and replace June 19 as the due date for secondary grades



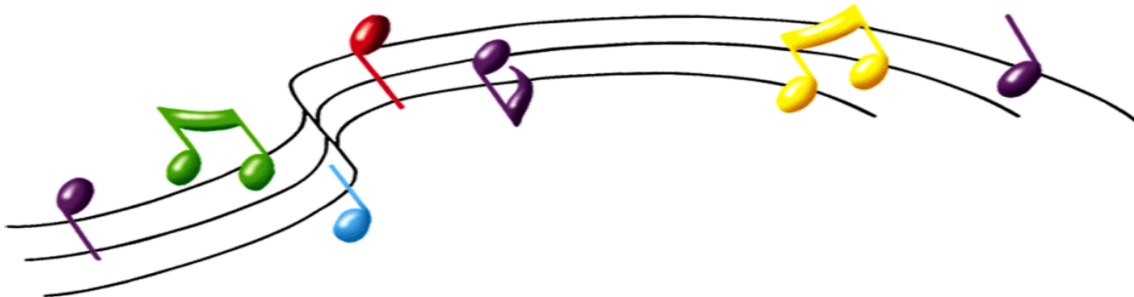
Apply to Receive \$250 for your school's program

On February 1st, California Casualty launched a **school Music & Arts Grant program for WEA members**. Enter now! Just in time for the 2019-20 school year, 140 grants will be awarded to association members across the country in September 2019.

The California Casualty Music and Arts Grant program will consider grant requests for public K-12 schools whose music and arts programs are in jeopardy or in great need of funding. Requests will also be considered for individual classrooms wishing to integrate music and/or arts projects within school curriculum.

Click here to learn more and to apply for grants:

<https://www.calcasmusicartsgrant.com/>



Answers to Contract Questions

LWEA Officers and Executive Committee

President:

[Howard Mawhinney](#)
LWEA Office / 425-822-3388

Vice President:

[Gerry Wilson](#)
Muir / 425-936-2640

Primary Rep:

[Patti Cook](#)
Rush / 425-936-2690

Intermediate Rep:

[Ben Corey](#)
Rockwell / 425-936-2670

Middle School Rep:

[Kyla Thompson](#)
Finn Hill / 425-936-2340

High School Rep:

[Katie Badger](#)
RHS / 425-936-1800

Specialists Rep:

[Marilyn Hargraves](#)
LWHS / 425-936-1700

Special Services Rep:

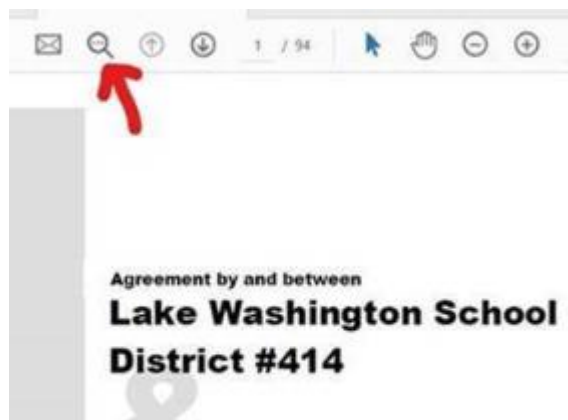
[Sarah Cooper](#)
Juanita Preschool /
425-936-2570

Ethnic Minority Rep:

[Maryziel Galarpe](#)
Blackwell / 425-936-2520

**LWEA -
this is your
union!**

1. From the contract pdf, open the “find” function:



2. From page 1 of the contract, use the “find” dialog box to enter the general topic you’re looking for:



3. Select “next” until you locate the specific language you are looking for:



If you cannot find what you are looking for or still need further clarification, we are always here for you 😊 Contact [Howard Mawhinney](#) or [Terri Neely](#) at the LWEA office.

Marketplace

Ads are run in the Update on a first come, first served basis. All ads need to be in written form. Send directly to [Sheila Hagerman](#) in the LWEA office.

All ads are subject to the approval of the LWEA Executive Committee and may be edited for length.



**March 13 &
March 14**

Behavior Support for
Special Education
Students

March 15 - 17

NEA Leadership
Summit

March 19

Erasing Debt

March 20

Wine & Wisdom

March 23

Saturday

LWEA Equity Conference



April 2019 Capital Projects Levy

Lake Washington School District will have a Capital Projects Levy on the April 23, 2019 ballot.

- Lake Washington needs more classrooms for students to support our **rapid enrollment growth**.
- Our highest priorities are **creating safe schools and maintaining quality classrooms**.
- The **2019 levy maintains the current tax rate with no rate increase**.

This measure authorizes a six-year levy totaling \$120 million or \$20 million per year for six years.

Learn More: [Frequently Asked Questions](#)

FOR SALE!



WANTED

Send your ads to the LWEA office - [Terri Neely](#)