



Update - Stay Connected

September 9, 2020

Our Fearless Leader Returns and Our Fearless Leadership Continues...

Dear members,

Back in June, I notified you that our Executive Committee approved a motion for Howard Mawhinney to be placed on leave while he recovered from a serious and unexpected health concern. I am pleased to share that Howard has officially returned from leave as of Monday, September 8.

As part of Howard's return, we have reorganized our communication channels (again). We are (perpetually) asking for your patience. Questions and concerns can always be directed to your building rep or as follows:

- For questions from **Elementary & Secondary: Librarian/Counseling Specialists, Itinerant Music/PE Teachers, ESAs, ELL/SN Teachers, and SpEd Teachers**: LWEA President Howard Mawhinney (HMawhinney@washingtonea.org)
- For questions from **Elementary staff**: LWEA Uniserv Director Katie Bishop (KBishop@washingtonea.org)
- For questions from **Secondary staff**: LWEA VP Katie Badger (Katie.Badger@washingtonea.org)
- For questions regarding the **Professional Fund, Leaves, and SEBB**: Terri Neely (TNeely@washingtonea.org)
- For questions regarding **LWEA membership and enrollment**: Lama Chikh (LChikh@washingtonea.org)

We are settling into a new, temporary "normal" for this school year, and many members are finding challenges at every turn. We will continue to collaborate with the district on options that support our members in doing their best work as educators. This summer, our ability to work together with one voice ensured many successes in an otherwise very vulnerable time. As ever, we are better together because our members are smart, hard-working, and caring educators. Let's continue this practice and help each other, be honest with each other, thank each other, recognize each other for hard work and collaboration.

I personally want to thank Katie Bishop, Terri Neely, Lama Chikh, each member of our summer bargaining teams, and our Executive Committee for their hard work on behalf of LWEA; every member who shared words of encouragement or support this summer; and all 2,100+ LWEA members for being generally awesome.

In Solidarity,

Katie Badger, LWEA Vice-President and RHS Teacher

LEAP Calendar 2020-21

Part of our LOU was an agreement to deduct three LEAP Wednesdays from the calendar. Per section XIII of the LOU, LWEA represented members will end their workday 90 minutes early on **February 10th**, **February 24th**, and on **one ITW day of their choice**.

<i>DATE</i>	<i>Type</i>	<i>DATE</i>	<i>Type</i>
Wednesday, September 2, 2020	No LEAP	Wednesday, February 3, 2021	Professional Learning
Wednesday, September 9, 2020	Individual Teacher Work	Wednesday, February 10, 2021	Team Collaboration
Wednesday, September 16, 2020	Professional Learning	Wednesday, February 17, 2021	Individual Teacher Work
Wednesday, September 23, 2020	Team Collaboration	Wednesday, February 24, 2021	Professional Learning
Wednesday, September 30, 2020	Professional Learning	Wednesday, March 3, 2021	Team Collaboration
Wednesday, October 7, 2020	Team Collaboration	Wednesday, March 10, 2021	Professional Learning
Wednesday, October 14, 2020	Individual Teacher Work	Wednesday, March 17, 2021	Individual Teacher Work
Wednesday, October 21, 2020	Team Collaboration	Wednesday, March 24, 2021	Professional Learning
Monday, October 28, 2019	Professional Learning	Wednesday, March 31, 2021	Team Collaboration
Wednesday, November 4, 2020	Individual Teacher Work	Wednesday, April 14, 2021	Individual Teacher Work
Wednesday, November 11, 2020	No LEAP	Wednesday, April 21, 2021	Team Collaboration
Wednesday, November 18, 2020	Professional Learning	Wednesday, April 28, 2021	Professional Learning
Wednesday, November 25, 2020	No LEAP	Wednesday, May 5, 2021	Team Collaboration
Wednesday, December 2, 2020	Professional Learning	Wednesday, May 12, 2021	Individual Teacher Work
Wednesday, December 9, 2020	Team Collaboration	Wednesday, May 19, 2021	Professional Learning
Wednesday, December 16, 2020	Individual Teacher Work	Wednesday, May 26, 2021	Team Collaboration
Wednesday, January 6, 2021	Professional Learning	Wednesday, June 2, 2021	Team Collaboration
Wednesday, January 13, 2021	Team Collaboration	Wednesday, June 9, 2021	Individual Teacher Work
Wednesday, January 20, 2021	Individual Teacher Work	Wednesday, June 16, 2021	Individual Teacher Work
Wednesday, January 27, 2021	Individual Teacher Work		

LWEA Office is relocating. We will move into our Redmond location later this year.

425-822-3388



Office Staff

Office Manager: [Terri Neely](#)
Admin Assistant: [Lama Chikh](#)
UniServ Rep: [Katie Bishop](#)

LWEA Officers and Executive Committee

President:

Howard Mawhinney
LWEA Office / 425-822-3388

Vice President:

Katie Badger
LWEA Office / 425-822-3388

Primary Rep:

Patti Cook
Rush / 425-936-2690

Intermediate Rep:

Mary Kay Weinmeister
Rockwell / 425-936-

Middle School Rep:

Kyla Thompson
Finn Hill / 425-936-2340

High School Rep:

Rachelle Horner
EHS / 425-936-1500

Specialists Rep:

Marilyn Hargraves
LWHS / 425-936-1700

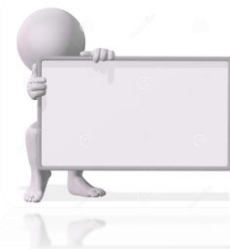
Special Services Rep:

Cookie Grant-Suggs
Rush / 425-936-2690

Ethnic Minority Rep:

Cathey Hettinger
Barton / 425-936-2480

**LWEA -
this is your union!**



Key dates for LWEA represented members – Semester 1

- By September 30, complete pre-assessment.*
- SEBB Open Enrollment Oct 26 – Nov 23
- By November 1, meet with evaluator.*
- **By October 1, complete 4.5 hours Annual Mandatory training; 1 hour Safety training; 2 hours asynchronous learning, planning, and application time.**
- October 12, 13, 15: half-day day elementary conferences; preschool conferences.
- November 4: last day for secondary 1st quarter (grades due November 12).
- January 20: elementary grades due.
- January 26, 28, 29: half-day elementary conferences; preschool conferences.
- January 22, last day for secondary semester 1 (grades due February 1).

Key dates for building reps – Semester 1

What?	When?	Where in CBA?
Staff meeting plan	By October 1	14.4
Building budget review	By October 1; finalized by November 15	10.10
Sub coverage plan*	By October 1	12.8.2
Evaluation process review*	By September 15	26.6.2
Specialists coverage plan*	By October 1	13.5.8
Guidance Team procedures materials review	By October 1	Appendix P.1
Structured collaboration between Sped/504 and gen ed staff meetings plan	By October 15	Appendix P.2
Caseload counts occur on October 1, December 1		

*** means** we are currently working with the district on this topic and more information will be shared in the next 2 weeks.

Remember To Add This to Your Daily Calendar :)



Marketplace

Ads are run in the Update on a first come, first served basis. All ads must include a home email and/or phone number. Send directly to [Terri Neely](#) in the LWEA office.

All ads are subject to the approval of the LWEA Executive Committee and may be edited for length.



Sept. 9

Weds Early Release

Sept. 10

First Day - Preschool

Sept. 15

Rep Assembly Mtg

Sept. 22

First Day of Autumn



NEA Member Benefits

As Association members, you have access to a wealth of information, time and money savings programs and other deals and discounts through [NEA Member Benefits](#). Visit [NEA Member Benefits' YouTube channel](#) for short videos on helpful tips and advice on how to maximize hard-earned dollars and planning for a secure future.

<https://www.washingtonea.org/membership/nea-member-benefits-september-2020/>

FOR SALE

Leather Recliner Loveseat, \$400 OBO. Great condition. Dark Brown with cream stitching. Both sides recline to almost flat. Manual opening levers on sides. You would need to pick up. Contact Paula Clements, savemyturtles@gmail.com for more information.

FREE

30 Fir Log Rounds of various lengths and sizes. Contact Shelley Desmond (retired) at skdesmond@yahoo.com for picture.

Together "We" Can Do Anything.....

