



# Update - Stay Connected

October 8, 2020

## LWEA Nominations

**Nominations** for the positions of Lake Washington Education Association Officers, Executive Board Members, and Delegates:

- Open on Friday, October 9<sup>th</sup> at 9:00 AM and will
- Close on Thursday, October 22<sup>nd</sup> at 5:00 PM

You should have received a [Notice of Nominations and Elections](#) for the LWEA Executive Board and WEA and NEA Rep Assemblies in your home PO mail.



If you do not receive a letter, send an email to [Terri Neely](#) with your home address.

All nominations must be made by a member of the Lake Washington Education Association in good standing. Self-nomination is allowed. **To be eligible for any position the nominee must be a member in good standing.**

Nominations should be sent to the LWEA office, care of [Terri Neely](#).

## Elementary Conferences Cancelled

The schedule for the week of October 12 will be:

- Monday (10/12) & Tuesday (10/13) – Regular school days
- Wednesday (10/14) – Regular Wednesday early-release schedule
- Thursday (10/15) – AM: Half day for Students and PM: Teacher individual/team planning and optional professional development
- Friday (10/16) – No school – Teacher LEAP Day

The afternoon of Thursday, October 15 is for teachers to participate in individual and/or team planning or to participate in optional professional development. Knowing the number of curriculum and technology changes this year, that afternoon can provide some additional time to do the work you identify for yourself.

# Thank Your LWEA Bargaining Team

The LWEA Bargaining team has spent, and will continue to spend, many hours bringing your voice to the bargaining table with LWSD. Let them know how much you appreciate their advocacy on your behalf. Our team members are:

Nova Frank – FHMS

Adam Wujick – RMS

Heather Jones – Redmond EI

Sharon Curry – RHS

Denise Radecke – Blackwell

Mary Kay Weinmeister – Rockwell

Patti Cook – Rush

Gerry Wilson – Muir

Kyla Jackson (Thompson) – FHMS

Alyssa Luiten – Alcott

Cassie Huffman – Twain

Stephanie Egeberg – Mead

Marilyn Hargraves – LWHS

Howard Mawhinney – LWEA

Katie Badger – LWEA

And a **HUGE** thank you to **YOU**, our LWEA members, for providing your input and voice to the bargaining efforts by completing the LWEA Survey. In just one week we had 77% participation!!



## LEAP Calendar 2020-21

Part of our LOU was an agreement to deduct three LEAP Wednesdays from the calendar. Per section XIII of the LOU, LWEA represented members will end their workday 90 minutes early on **February 10<sup>th</sup>**, **February 24<sup>th</sup>**, and on **one ITW day of their choice** **REMEMBER to take your day!**

## Remedies and Overages

Class Size and Case Load Remedies will be calculated on the first day of school in October, December, February and March. To learn more see **Article 13: Class Size/Case Load** of the Collective Bargaining Agreement. [LWEA/LWSD Contract \(CBA\)](#) Salary compensation remedies should be reflected in your October paycheck.

## WEA On-Line Workshops

The WEA has expanded their on-line trainings. There are 23 available offerings through December 2020 – both Synchronous and Asynchronous courses are available. Since funding for these trainings come from an OSPI grant, the trainings are free to any educator across the state and there are free clock hours available as well.

To find out more and to register, go to: [WEA On-Line Workshops](#)

**LWEA Office is relocating. We will move into our Redmond location later this year.**

**425-822-3388**



### Office Staff

**Office Manager:** [Terri Neely](#)  
**Admin Assistant:** [Lama Chikh](#)  
**UniServ Rep:** [Katie Bishop](#)

## LWEA Officers and Executive Committee

### President:

[Howard Mawhinney](#)  
LWEA Office / 425-822-3388

### Vice President:

[Katie Badger](#)  
LWEA Office / 425-822-3388

### Primary Rep:

[Patti Cook](#)  
Rush / 425-936-2690

### Intermediate Rep:

[Mary Kay Weinmeister](#)  
Rockwell / 425-936-2670

### Middle School Rep:

[Kyla Thompson](#)  
Finn Hill / 425-936-2340

### High School Rep:

[Rachelle Horner](#)  
EHS / 425-936-1500

### Specialists Rep:

[Marilyn Hargraves](#)  
LWHS / 425-936-1700

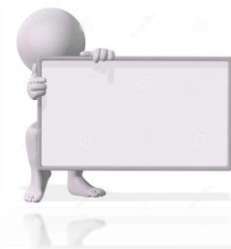
### Special Services Rep:

[Cookie Grant-Suggs](#)  
Rush / 425-936-2690

### Ethnic Minority Rep:

[Cathey Hettinger](#)  
Barton / 425-936-2480

**LWEA -  
this is your union!**



## Your Executive Committee

These are your representatives responsible for carrying out the programs and policies of our Representative Assembly (the governing body of the LWEA).

The Executive Committee members spend hundreds of hours each year in service to the LWEA. The Executive Committee serves to engage, unite, and be responsive to you, our members. They set the LWEA's mission and establish the strategies necessary to support and promote members in our effort to provide quality equitable public education.

In short, the Executive Committee is here to represent you. Working alongside at-large members who volunteer their time to support strategic initiatives, the Executive Committee works to protect your rights under our contract, advocate on your behalf, assist you in resolving conflicts, answer your questions and provide support for you. Please do not hesitate to contact them with questions, concerns or issues. Your Executive Committee is hard at work for you.

## SAGA is back!

We will be working again this year to increase the engagement of members who identify as part of the LGBTQ+ community in our organization. This is an affinity group that is a safe space for teachers in the LGBTQ+ community to come together to build connection and provide mutual support in navigating the public education system for ourselves and our students.

**Our first meeting for this year is scheduled for Thursday October 22nd from 4:30-5:30 pm. We will be meeting virtually on a Teams meeting.** Any LWEA members who identify as LGBTQ are invited to join us as we continue our meetings this year sponsored by LWEA. At this first meeting we will spend some time getting to know each other and/or reconnecting, having fun and building community. We also need to add a couple new people to our planning committee so if you are interested in helping to plan and support our work this year, please be sure to let us know.

We hope you can attend and join us as we begin our second year together! Please RSVP to [vmccarter@lwsd.org](mailto:vmccarter@lwsd.org) to be added to the TEAMS meeting and receive the meeting link. If you cannot attend at this time but would like to be connected for future meetings (or to join our planning committee), please contact Vicki McCarter at [vmccarter@lwsd.org](mailto:vmccarter@lwsd.org)

Thank you,

Your LWEA SAGA Planning Committee

## Marketplace

Ads are run in the Update on a first come, first served basis. All ads must include a home email and/or phone number. Send directly to [Terri Neely](#) in the LWEA office.

All ads are subject to the approval of the LWEA Executive Committee and may be edited for length.



**Oct. 16**

No Students – LEAP Day

**Oct. 20**

Rep Assembly

**Oct. 27**

Comp Teams Mtg

**Oct. 31**

Halloween



### FOR SALE:

**Grass-fed beef and Mangalitsa-cross pork** available. Contact Josh at 425-445-0404 for information. Text is best! If you don't have an empty freezer, split a side with a few friends. (Jill Johnson, LWHS)

### ITEMS FOR SALE:

1. **Beautiful Handcrafted one of a kind Hutch.** This Hutch was made by my uncle and we have decided to down size. It has above and below storage with adjustable shelving. \$300.00 Great condition
2. **Oak Rolltop Desk**-Great condition \$50.00
3. **Front Load Dryer.** Works great, we just bought a new set because the washing machine broke. \$50.00

If interested in 1-3 above, or would like to see pictures, contact [Carnyeaton2@msn.com](mailto:Carnyeaton2@msn.com) (Kellie Eaton, Smith)

### FOR RENT:

**Large 1 Bedroom + Office** with 10 foot vaulted ceilings; x-large floor-to-ceiling custom master closet; in-unit washer/dryer; fireplace; ground floor patio; 1 underground parking space; free on-site storage; easy walk to Lake Washington, Kirkland Urban, QFC, Google, and shops and all of downtown's Kirkland restaurants and parks; small pets OK; no smokers please. 511 7th Ave Unit #107. \$2100 per month – available after November 1. Call 206-930-7998 for more information or email [Jeremy@jImpartners.com](mailto:Jeremy@jImpartners.com) link to flyer [https://netorg4408113-my.sharepoint.com/:w:/g/personal/jeremy\\_jImpartners\\_com/EeW3cYU2F3xBj8GhbobWeqcBLfE2FSHxluU-sAFCVMJ17A?e=I9Dgz1](https://netorg4408113-my.sharepoint.com/:w:/g/personal/jeremy_jImpartners_com/EeW3cYU2F3xBj8GhbobWeqcBLfE2FSHxluU-sAFCVMJ17A?e=I9Dgz1) (Rachel Pemble, Sp Services)

**1 Bed/1 Bath Condo** Quiet community, fire place, remodeled kitchen, covered parking. NEAR Juanita Elementary and Juanita HS. Preferred availability after the new year, but is flexible. \$1800/m - If interested please contact Shannon [shannon.e.adams@live.com](mailto:shannon.e.adams@live.com) (Shannon Adams, Audubon)

Enjoy the Beauty of Fall

