



Update - Stay Connected

October 21, 2020



SEBB Open Enrollment

Open enrollment for benefits begins on October 26th. This is your opportunity to make changes to your medical, dental, vision and optional benefits for the 2021 calendar year. If you are enrolling or changing plans all changes must be completed by November 23rd. These changes will go into effect January 1, 2021 and will affect your January paycheck. No action is needed if you are currently enrolled or have waived coverage and do not want to make any changes.

2021 SEBB Premium Increases

Kaiser and Premera plans increased in cost for the 2021 plan year.

- Kaiser monthly increases range from \$3 for a single employee to \$90 for family coverage depending on the plan.
- Premera monthly increases range from \$6 for a single employee to \$18 for family coverage depending on the plan.
- UMP plans have no increase in cost.

Click [here](#) for a complete comparison of 2021 monthly premiums, deductibles, and out of pocket limits

Links to Additional Open Enrollment Information

- [District's staff portal - Benefit Information](#)
- [SEBB Open Enrollment website](#)

Your SEBB account

You will be able to make changes to your coverage starting October 26th. To access your SEBB account click [here](#). For help with your SEBB account call 855-648-3100 Monday-Friday from **8:00a.m. – 5:00p.m.**

Need Help Choosing Benefit Plans?

For individual assistance [Schedule an appointment](#) with American Fidelity to get assistance with SEBB Benefits Enrollment. If you are unable to schedule an appointment or just want to ask a question Payroll/Benefits staff along with American Fidelity will be holding Teams Q&A sessions on these dates:

- Wednesday October 28, 3:00 p.m. – 5:00 p.m.
- Monday November 2, 3:00 p.m. – 5:00 p.m.
- Thursday November 19, 3:00 p.m. – 5:00 p.m.

Please email SEBBbenefits@lwsd.org with the date you want to attend to receive your calendar invitation. *These are open Q&A sessions and not for individual assistance.*

Summary of Benefits and Coverage (SBC)

As required by the Affordable Care Act, a summary of Benefits and Coverage (SBC) for each medical plan is available by clicking [here](#).

For more information on: adding dependents, Virtual benefit fairs, OE Webinars, Optional Benefits, FSA and DCAP, Dental plans, Spouse or Domestic Partner Premium Surcharge, and more – see the District Staff Portal.

First Educators of Color Gathering

Connecting Educators of Color, **Sharing** ideas/struggles and **Empowering** each other to make change.

Who: All Educators of Color

When: Oct. 29 4:00-5:00pm

Where: Join us **VIRTUALLY!** The link will be sent to you one week prior.

RSVP to receive the virtual meeting link: LWEA-EOC@lwsd.org

WEA On-Line Workshops: Certification Trainings

WEA is offering a series of online trainings to help you navigate next steps with your certification. The WEA ESA and Teacher Certification trainings will help participants understand the latest state certification policy changes, examine certificate renewal options and explore the OSPI eCert platform. Both trainings also address the latest COVID-19 certification updates. WEA's Professional Growth Plan (PGP) Part 1 class is for all certificated educators considering using PGPs for certificate renewal, meeting the STEM certificate renewal requirement and for salary advancement purposes. Registration is free to WEA members. Space is Limited. Certification Trainings available October – December 2020 are:

- **Teacher Certification 101:** 4:00-7:00PM on
 - Tuesday, October 27
 - Monday, November 16
 - Wednesday, December 2
- **ESA Certification 101:** 4:00-7:00PM on
 - Wednesday, October 29
 - Tuesday, November 18
- **Professional Growth Plan #1:** 4:00-7:00PM on
 - Monday, November 9
 - Thursday, November 19

Register at: <https://www.washingtonea.org/pd/certification-licensure/>

More Certification trainings will be offered in 2021. These include: TE Cert 101, ESA Cert 101, PGP 1, 2, & 3, National Board Info Sessions, and Best Practices in Professional Practice.



LWEA Office is relocating. We will move into our Redmond location later this year.

425-822-3388



Office Staff

Office Manager: [Terri Neely](#)
Admin Assistant: Open Position
UniServ Rep: Open Position

LWEA Officers and Executive Committee

President:

[Howard Mawhinney](#)
LWEA Office / 425-822-3388

Vice President:

[Katie Badger](#)
LWEA Office / 425-822-3388

Primary Rep:

[Patti Cook](#)
Rush / 425-936-2690

Intermediate Rep:

[Mary Kay Weinmeister](#)
Rockwell / 425-936-2670

Middle School Rep:

[Kyla Thompson](#)
Finn Hill / 425-936-2340

High School Rep:

[Rachelle Horner](#)
EHS / 425-936-1500

Specialists Rep:

[Marilyn Hargraves](#)
LWHS / 425-936-1700

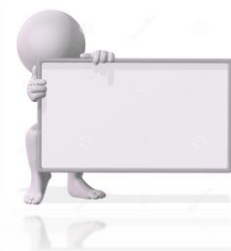
Special Services Rep:

[Cookie Grant-Suggs](#)
Rush / 425-936-2690

Ethnic Minority Rep:

[Cathey Hettinger](#)
Barton / 425-936-2480

**LWEA -
this is your union!**



Professional Funds 2020-21

Everything you need to know about your Professional Funds.

Guidelines:

- Deadline to submit Professional Funds receipts is June 1, 2021.
- Accumulate receipts up to allowable amount and submit any time prior to the deadline.
- Purchases must be made between June 1, 2020 and May 31, 2021.
- Purchases must be on a separate itemized receipt and cannot contain other personal items.
- All materials purchased will remain the property of the District.

Allowable Expenses:

- Home internet, you can claim \$50/month. It does not matter if bundled amount is more or less.
- Cell phone data, you can claim \$41.67/month. It does not matter if bundles amount is more or less.
- Union dues, simply complete the LWEA Dues Receipt. [LWEA Dues Receipt](#)

Unallowable Expenses:

- Hardware for home internet
- Computers, laptops, and printers
- Furniture

More information on guidelines, allowable expenses, and unallowable expenses can be found on the Lake Washington School District Professional Fund Reimbursement Form: [LWSD PF Reimbursement Form](#)

For answers to many of your Professional Fund questions, see the districts [PF Q&A](#) [LWSD](#)

If after review you still have questions, please send to askprofessionalfund@lwsd.org

Kaiser Permanente offers more ways for members to get flu shots

The COVID-19 pandemic is still under way as we move into flu season. This year, more than ever, everyone who can get a flu shot needs to do so as soon as possible. The flu shot is the best way to protect against the flu and can reduce the risk of illness or hospitalization from the flu.

Our focus this year is on new ways to safely and conveniently deliver flu shots to our members. We're offering extended hours and drive-up vaccination clinics at our medical facilities to help ensure members can maintain physical distancing requirements. For a limited time only, our members may also get a flu shot at multiple retail locations.

[READ MORE](#)

Marketplace

Ads are run in the Update on a first come, first served basis. All ads must include a home email and/or phone number. Send directly to [Terri Neely](mailto:Terri.Neely@lwea.org) in the LWEA office.

All ads are subject to the approval of the LWEA Executive Committee and may be edited for length.



Oct. 27
Comp Teams Mtg

Oct. 31
Halloween

Nov. 3
Election Day

Nov. 3
Ex Committee

Nov. 11
Veteran's Day
No School



WEA Children's Fund

The purpose of the Children's Fund is to make sure all WA state children thrive, regardless of family income. YOU can access funds: Members should know that they can access funds, on a pre-approved basis, for students who attend their school. The WEA Children's Fund is a need-based fund that can help students with purchasing expendable school supplies, backpacks, clothing and eyeglasses, and could serve as a supplement to your building-based "help" funds. Check out their website for more details and how you can support the fund: <https://www.washingtonea.org/we-are-wea/childrensfund/>



A registered 501(c)(3) non-profit organization that aims to make sure all Washington State students thrive in school, regardless of their family income.

WEA CHILDREN'S FUND

WHO, WHERE, AND HOW WE HELP:

1000 KIDS
We approve requests for funds to help almost 1000 children in need every year.



SCHOOL DISTRICTS 294
Requests are submitted by WEA members in public education all across our state.



57% NEED CLOTHING
WEA members use our assistance to purchase a variety of items, but mostly clothing like warm coats.



DONATIONS \$100K
is how much it would take for the Children's Fund to stay open for an entire school year.



NO CHILD SHOULD GO WITHOUT THE BASICS.
Make a difference by donating today!
Visit [washingtonea.org/childrensfund/](https://www.washingtonea.org/childrensfund/), or email us at weachildrensfund@washingtonea.org