



Update - Stay Connected

December 2, 2020

LWEA Equity Team

Dear Colleagues,

We are excited to introduce the newly formed LWEA Equity team. Our mission is to empower educators, both individuals and collectively to dismantle racial injustice and systemic racism within the Lake Washington School District. In alignment with the LWEA mission statement to support, encourage, and engage members in our efforts to provide quality public education for all: the LWEA Equity team aims to reflect a commitment on behalf of its members to collaborate and support one another as well as tackle difficult challenges related to equity.

Our goals:

- Support building equity work
- Highlight equity work that is being done
- Advocating for systemic change
- Provide resources and best practices

As we move forward in this important equity work, we encourage to keep the lines of communication open.

Please contact us at: Elementary School: Karen Murk—kmurk@lwsd.org Middle School: Todd Bohannon—tbohannon@lwsd.org High School: Rachelle Horner—rhorner@lwsd.org

Signed,

Rachelle Horner (EHS), Brian Toews (RHS), Crystal Visperas (EHS), Todd Bohannon (Renn. MS), Fareeha Nasir (Alcott), James Anderson (Rosa Parks), Karen Murk (Muir), Vicki McCarter (NTSP), Maryziel Galarpe (Blackwell), Steffani Jesus-Muggli (District Equity Specialist)

WEA HCR (Human and Civil Rights) Zoom Leadership Summit

Saturday December 5, 2020 from 8:30 – 12:30

This is a free zoom event. Must be registered to attend.

Register Here: <https://www.washingtonea.org/home/events/type/sql/event/6308>

The **WEA HCR Leadership Summit** is a grow your own model of leadership development that prepares *future WEA BIPOC leaders and white allies* to advocate for racial, social and economic justice for our students, communities and WEA members. Eliminating institutional racism begins with individuals using their leadership and positions of power to do the right thing. Participants will examine how to create a resilient culture of inclusion and equity in their leadership and advocacy. Sessions are broken down into 100 level and 200 level sessions to prepare their own leadership journey as WEA members. Please see the attached flyer for more information on the breakouts.

LWEA Political Action Team

Hello! We are LWEA's Political Action Committee (PAC) and we want to invite you to **LWEA's Virtual Educators' Town Hall on Wednesday, December 9th from 5:30-6:30** featuring our guests from the 45th District, Representatives Roger Goodman, Larry Springer, and Vandana Slatter, and Senator Manka Dhingra. We are in the works of also garnering more Representatives from the 45th and 48th Districts.

During this Town Hall, LWEA educators and school staff can learn more about their Representatives' values and their plans to turn heartfelt beliefs into actionable changes.

Proposed topics will be the following (but not limited to):

- Supporting funding for increased staffing and protective measures for students and staff in remote, hybrid, or in-person learning models.
- Ensuring all students are successful in learning models and students feel safe and heard in classrooms.
- Prioritizing the physical and mental health of staff and students during this difficult time.
- Providing teaching staff with resources they need to create an equitable classroom environment.
- Implementing solutions and action steps to dismantle discrimination, racism and white supremacy in curriculum, classrooms, school structures and communities.

We are encouraged by Representatives Goodman and Springer's platforms and extend an invitation to all LWEA members to hear their ideas and make your voices and priorities heard!

The Virtual Educators' Town Hall will be held over Zoom on Wednesday, December 9th from 5:30-6:30. Please RSVP at Geraldine.Wilson@washingtonea.org. Gerry will then send you the Zoom link invite!

Thank you again and hope to see you there!

Martha Daman, Marilyn Hargraves, Crystal Visperas and Gerry Wilson
<https://www.lakewashingtonea.org/ourvoice/my-voice/>

Final Days to Vote – Ballots Close Friday, Dec 4 @ 5PM

Electronic ballots were sent to all LWEA members.

There are **several contested representative positions** for the **LWEA Executive Committee**

**YOUR
VOICE
MATTERS**



This is YOUR union. **LWEA are YOU!**

Every vote matters – let your voice be heard.

LWEA Office is relocating. We will move into our Redmond location later this year.

425-822-3388



Office Staff

Office Manager: [Terri Neely](#)
Admin Assistant: [Diana Wagner](#)
UniServ Rep: [Laura-Lee Barron](#)

LWEA Officers and Executive Committee

President:

[Howard Mawhinney](#)
LWEA Office / 425-822-3388

Vice President:

[Katie Badger](#)
LWEA Office / 425-822-3388

Primary Rep:

[Patti Cook](#)
Rush / 425-936-2690

Intermediate Rep:

[Mary Kay Weinmeister](#)
Rockwell / 425-936-2670

Middle School Rep:

[Kyla Thompson](#)
Finn Hill / 425-936-2340

High School Rep:

[Rachelle Horner](#)
EHS / 425-936-1500

Specialists Rep:

[Marilyn Hargraves](#)
LWHS / 425-936-1700

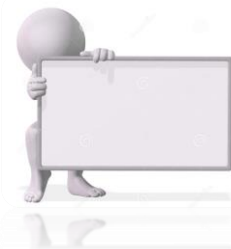
Special Services Rep:

[Cookie Grant-Suggs](#)
Rush / 425-936-2690

Ethnic Minority Rep:

[Cathey Hettinger](#)
Barton / 425-936-2480

**LWEA -
this is your union!**



Attn School Counselors: Do you know of a student in need?

We know you are often the initial contact when a student or family in your school is struggling or in crisis. Often these needs are met through PTSA support or other school-based programs. However, much too often, some schools experience higher levels of need than the available funds can address. LWEA wants to make you aware of two programs that can provide additional funds to support students and families in need.

LWEA Gift Card Program

LWEA has a limited supply of \$50 Fred Meyer gift cards. These gift cards are available on an as needed basis to students and/or their families for whom you have identified a need. To request a gift card(s), email [Terri Neely](#) and identify the school, student's name and need (clothing, food, household item, etc). All information will be kept confidential and the cards will be sent to you to distribute to the student/family. We appreciate the incredible work you do on behalf of all students.

WEA Children's Fund

The purpose of the Children's Fund is to make sure all children in our state thrive, regardless of family income. As an LWEA member, YOU can access funds: Members should know that they can access funds, on a pre-approved basis, for students who attend their school. The WEA Children's Fund is a need-based fund that can help students with purchasing expendable school supplies, backpacks, clothing and eyeglasses, and could serve as a supplement to your building-based "help" funds. Check out their website for more details and how you can support the fund: <https://www.washingtonea.org/we-are-wea/childrensfund/>

Educators of Color Gathering

Connecting Educators of Color, **Sharing** ideas/struggles and **Empowering** each other to make change.

Who: All Educators of Color

When: Dec. 10th - 4:00-5:00pm

Where: Join us **VIRTUALLY!** The ZOOM link will be sent to you one week prior to the meeting.

RSVP: to receive the virtual meeting link: LWEA-EOC@lwsd.org

RETIREMENT



Pre-Retirement Seminar

Taking charge of your future

January 23, 2021

9:00 AM (Estimated 3-4hours)

Via: Zoom

This will be the first pre-retirement seminar for the 2020-21 school year. Dates and times for future seminars will be determined based upon need. This seminar is only open to members who plan on retiring in 2021. Spouses are encouraged to attend. Direct questions and return [Pre-Retirement Seminar](#) form to [Terri Neely](#)

Marketplace

Ads are run in the Update on a first come, first served basis. All ads must include a home email and/or phone number. Send directly to [Terri Neely](#) in the LWEA office.

All ads are subject to the approval of the LWEA Executive Committee and may be edited for length.



Dec. 4

LWEA Ballots Close

Dec. 8

Rep Assembly

Dec. 15

Competency Teams
Mtg

Dec. 21

Winter Break!

**Submit Your
LWEA Ballot**



e-Learning Opportunities

Through a partnership with eLearning for Educators at The Evergreen State College and a grant from OSPI, WEA is offering free online courses about inclusionary practices. Inclusionary practices are strategies educators can use to support all students. This opportunity is open to all Washington educators through WEA's inclusionary practices grant.

Funding is limited and is available on a first-come, first-served basis. Accessing this opportunity is easy. Please note your registration must adhere to the following guidelines in order to qualify.

* Navigate to the [eLearning for Educators](#) website. **Select only ONE of the following approved courses. Only the classes outlined below are available for free with this grant.** Clock hours are included. Course descriptions can be found on the eLearning for Educators website.

- Accommodations for Students with Disabilities
- Autism Spectrum Disorder: An Overview for Educators and Evidence-Based Practices
- Classroom Assessment: Progress Monitoring
- Classroom Management and Addressing Challenging Behaviors
- Differentiated Instruction
- Evidence-based Practices
- Functional Behavioral Assessment
- High-Leverage Practices
- Inclusion Considerations for Students with Disabilities
- Quality Indicators for Assistive Technology
- Universal Design for Learning

* Proceed to the "How to Register" area on the right side of the website and click on the "Register Online" link. **When completing the online registration form, follow these [registration instructions](#) in order to qualify.**

* If your registration meets the above guidelines, within two to three business days of registering, you'll receive an email from eLearning for Educators with instructions on how to access the course.

* You may only register for one of the approved courses at a time. Successful course completion is required before registering for an additional course, if funding has not been fully utilized.

* If you have questions or need more information, please contact elarningforeducators@evergreen.edu.

NEA Member Benefits

As an LWEA member, you have additional NEA member benefits available to you. See this link to find out more.

[NEA Member Benefits \(washingtonea.org\)](http://washingtonea.org)