



# Update - Stay Connected

December 16, 2020

## LWEA Election Results



**Officers and Executive Committee Reps** The ballots have been counted and your voice has been heard. The following members have been elected for the 2021-22 school year:

President	<b>Howard Mawhinney</b>	Primary Rep	<b>Patti Cook</b>
Vice President	<b>Katie Badger</b>	Special Services Rep	<b>Cookie Grant-Suggs</b>
High School Rep	<b>Rachelle Horner</b>	Specialist Rep	See Page 2
Middle School Rep	<b>Kyla Jackson (Thompson)</b>	Ethnic-Minority Rep	See Page 2
Intermediate Rep	See Page 2		

### The following people will represent LWEA at the NEA Rep Assembly:

Howard Mawhinney	Gerry Wilson	Denise Radecke
Leanne Mawhinney	Patti Cook	Cathey Hettinger
Marilyn Hargraves	Cookie Grant-Suggs	Mary Kay Weinmeister
Katie Badger	Rachelle Horner	Kyla Jackson (Thompson)

### The following people will represent LWEA at the WEA Rep Assembly:

Howard Mawhinney	Denise Radecke	Sarah Cooper	Fareeha Nasir
Leanne Mawhinney	Cathey Hettinger	Sharon Curry	Axie Dompier
Marilyn Hargraves	Mary Kay Weinmeister	Bryan Melerski	John Owens
Katie Badger	Gerry Wilson	Marisa Gonzales	Andrea Bardin
Maryziel Galarpe	Miok Oh	Martha Daman	Lisa Daniels
Patti Cook	Kyla Jackson (Thompson)	Kathy Aslamy	Ann Rane
Rachelle Horner	Cookie Grant-Suggs	Alyssa Luiten	Samantha (Sami) Wilson
Stephanie Egeberg	LT Turner	Hanah Rasmussen	Jayden Johnson

# Congratulations

And

*Thank You* for representing and being the voice of the LWEA

## LWEA Election Results (cont)

### Election Update:

Our election procedures state that a candidate shall receive 50% +1 of the vote to be elected. The votes for the Specialist Rep did not provide any candidate with the required 50% + 1 votes, so we will be holding a run-off election for this position in the beginning of January.

Due to the unexpected remote situation we are currently in, we found that some of our election procedures needed to be updated to align with this unique setting. It was brought to our attention that some irregularities occurred for the contested races that may have created an unfair advantage for some candidates. With guidance from WEA and to be fair to all candidates, we will be rerunning the Minority Rep and Intermediate Rep positions in January.

Ballots will be sent to LWEA members home emails on January 4.

## WEA Member Survey

### From Larry Delaney, WEA President

As always, we are strongest when we work together. Adding your voice and experiences, whether you are at school in person or working remotely during these unprecedented times, is critical so we can share your stories and advocate for all educators as WEA works with OSPI, the Department of Health, Labor and Industries, the governor's office, and other education stakeholders.

We ask you to take a few minutes to share your voice and help build our collective strength by taking the survey.

While WEA continues to work at the state level to advocate for clear and enforceable safety requirements, we support our locals in making decisions that are safe and appropriate for individual communities. If you are experiencing problems around health and safety issues, we encourage you to reach out to your local. Thanks for building strength and unity by taking the survey.

If you are an LWEA member and did not receive the email with survey link from Larry Delaney, first check your junk mail then contact [Diana Wagner](#).

**The WEA Member Survey will close at the end of the day on **Wednesday – TODAY!!****

**LWEA Office is relocating. We will move into our Redmond location later this year.**

**425-822-3388**



### Office Staff

**Office Manager:** [Terri Neely](#)  
**Admin Assistant:** [Diana Wagner](#)  
**UniServ Rep:** [Laura-Lee Barron](#)

**LWEA Officers and  
Executive Committee**

**President:**

[Howard Mawhinney](#)  
LWEA Office / 425-822-  
3388

**Vice President:**

[Katie Badger](#)  
LWEA Office / 425-822-  
3388

**Primary Rep:**

[Patti Cook](#)  
Rush / 425-936-2690

**Intermediate Rep:**

[Mary Kay Weinmeister](#)  
Rockwell / 425-936-2670

**Middle School Rep:**

[Kyla Thompson](#)  
Finn Hill / 425-936-2340

**High School Rep:**

[Rachelle Horner](#)  
EHS / 425-936-1500

**Specialists Rep:**

[Marilyn Hargraves](#)  
LWHS / 425-936-1700

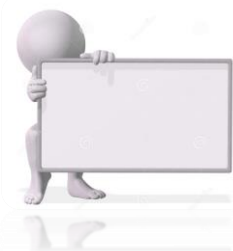
**Special Services Rep:**

[Cookie Grant-Suggs](#)  
Rush / 425-936-2690

**Ethnic Minority Rep:**

[Cathey Hettinger](#)  
Barton / 425-936-2480

**LWEA -  
this is your union!**



## New Professional Development Courses

### Synchronous and Asynchronous



In the past 12 months through an OSPI grant and partnership, WEA has provided more than 100 different trainings supporting inclusionary practices for all students in general education and special education classrooms. Your Association is pleased to announce that it is offering another series of 50 online courses -- asynchronous and synchronous -- for free to WEA educators.

**Asynchronous courses** are held via Canvas. Course are free and can be taken at your own pace. Recently added courses include Facilitating Quality Practice, Building Routines for Student Success in a Virtual Space, STEM for Secondary Educators, TPEP 101, TPEP Evidence and Artifacts, and UDL: A Day of Universal Design.

These self-paced trainings are available immediately and need to be completed by June 30, 2021. For a listing of offerings, please visit the [WEA web page](#) or [download a flier](#). Clock hours are provided.

For more information or questions about the asynchronous courses held on Canvas, contact [Scott Poirier](#).

**Synchronous courses** are held via Zoom. Courses and clock hours are free and open to all educators. Space is limited to the first 500 participants. [Click here](#) for a course list offered January through March 2021 or [download a flier](#). [Registration is required](#) and once the course is full, the course name will no longer be available in the dropdown menu on the registration page. A wait list is not maintained for these webinars.

For more information or questions about the courses held on Zoom, contact [Annie Lamberto](#).

## NE 85<sup>th</sup> Street Station Area Plan

**Subject:** Help Kirkland choose the best plan for the NE 85<sup>th</sup> Station Area Plan!

**Blurb:** Virtual public meeting: **Thursday, January 7, 2021 from 6 - 8 pm!** Community members can learn about the Station Area Plan and provide feedback to the project team.

A new Bus Rapid Transit station is coming to Kirkland at 85th and I-405 by 2024. Based on input you provided in spring of 2020, the City has developed a few possible plans for the area surrounding the future station. The City needs you to review the alternatives and share your opinion on the best Station Area Plan. Learn more and **share comments December 18 – January 25** at [www.kirklandwa.gov/stationareaplan](http://www.kirklandwa.gov/stationareaplan).

## Marketplace

Ads are run in the Update on a first come, first served basis. All ads must include a home email and/or phone number. Send directly to [Terri Neely](#) in the LWEA office.

All ads are subject to the approval of the LWEA Executive Committee and may be edited for length.



**Dec. 21 – Jan. 1**  
Winter Break

**Dec. 31**  
New Year's Eve  
Wishing everyone a healthy, safe and peaceful 2021 with a return to normalcy!

**Jan. 5**  
Exec Committee Mtg

**Jan. 12**  
Rep Assembly



RETIREMENT



## Pre-Retirement Seminar

**Taking charge of your future.**

**January 23, 2021**

**9:00 AM (Estimated 3-4hours)**

**Via: Zoom**

This will be the first pre-retirement seminar for the 2020-21 school year. Dates and times for future seminars will be determined based upon need.

This seminar is only open to members who plan on retiring in 2021. Spouses are encouraged to attend.

Direct questions and return [Pre-Retirement Seminar](#) form to [Terri Neely](#)

### FOR SALE:

**Wooden Table:** 3'x5' stainless steel-topped wooden table. Great condition, great quality. It has many more years of life - I'd keep it if I had room. Four matching wooden chairs are included - they just need new cushion coverings. Pics available! \$200 for everything. Our home is pet-free and non-smoking. We can't disassemble, so make sure you're able to transport this size of an item when you pick up. Contact [aidl84@gmail.com](mailto:aidl84@gmail.com) (Ann Deleon, Substitute Teacher)

