



# Update - Stay Connected

February 17, 2021

## What is the STEM Requirement for Certificate Renewal?

As of September 1, 2019, renewal applications for **Initial**, **Residency**, **Professional**, and **Continuing** teacher and **Initial/Continuing** CTE certificates require completion of at least 15 clock hours, **or** at least one goal from an annual professional growth plan (PGP), and an emphasis on STEM integration.

STEM integration is the authentic combination of at least two of the STEM components (science, technology, engineering, mathematics).

The WEA Center for Education Quality (CEQ) department is hearing from a lot of people looking for trainings that will qualify for the 15 STEM clock hour requirement for certification renewal. One of the reasons this is turning into a big need is because **PESB requires all STEM teachers and a lot of non-STEM teachers** (All K-8 Endorsed teachers and early childhood endorsed teachers for example) to get the clock hours. Some of these endorsements may surprise you.

### STEM requirement applies to the following endorsements:

- Elementary Education (K-8) endorsement
- Early Childhood Education (P-3) endorsement
- All Mathematics endorsements
- All Science Endorsements: Agriculture, Biology, Chemistry, Earth & Space Science, Physics, Biology,
- Computer Science
- Business Education
- Marketing
- Family and Consumer Sciences
- Technology Education
- All CTE

Note: The STEM certificate renewal requirement is considered to be met by holders of a valid National Board Certificate.

WEA is providing asynchronous and synchronous courses via Canvas and Zoom, respectively. Courses are free and available to all. For more information see: [STEM Course Flyer](#)

For more information regarding requirements please visit the OSPI website at <https://www.k12.wa.us/educator-support/continuing-education-clock-hours/stem-clock-hours>



Each week we will highlight essential safety information. This week, we are focusing on two key mitigation strategies that schools must implement when reopening.

## Universal Masking

Did you know that all students, staff, guests, and volunteers must wear a face covering that covers their nose and mouth while at LWSD facilities, including outdoor common areas? [Key understandings for universal masking:](#)

- PPE must be [worn properly](#). This includes wearing face coverings over the nose and mouth. Gators, bandanas, scarves, or masks with ventilators are not acceptable forms of face coverings.
- PPE must be worn [according to the task](#). As the risk transmission of a school setting increases, additional or specialized PPE is required. A staff member cannot “opt out” of wearing the minimum required PPE in any particular setting.
- Anyone who qualifies for an exemption from wearing a cloth mask will be provided an alternative face covering as an accommodation. You should not see unmasked adults on your school campus. Please [report concerns](#) about masking to your site supervisor immediately.
- There are very specific and limited circumstances for [when a mask can be temporarily removed](#).

## Physical Distancing

Schools must implement strategies that allow everyone to maintain six feet of distance, especially when people are engaging in a task for more than few minutes.

[Key understandings for physical distancing:](#)

- The [teacher station will be at least 6 feet](#) from the nearest student desk.

Each classroom has a [capacity number](#)

- *Classroom capacity is set at the number of **people** who can be seated with 6 feet of distance person to person and **shall not be exceeded**.*
- Classroom capacity is determined by Facilities, depends primarily on the size of the classroom, is based on the DOH/L&I requirements that schools ensure at least 6 feet of distance among students and staff, and is included in the [K-1 LOU](#).
- Teachers will be granted the opportunity to review their classroom setup and can appeal the set up if necessary.

Each in-person class has a [cohort size](#)

- *Classroom cohorts will not exceed 15 **students** for in-person instruction.*
- DOH identifies using cohorts as a key principle for reducing potential exposure to COVID in schools, and the cohort size is defined by DOH and included in the K-1 LOU.
- Maintaining classrooms as separate cohorts will be a high priority guiding principle when operationalizing the school day in LWSD schools.

### LWEA

8575 164<sup>th</sup> Ave NE  
Suite 100  
Redmond WA 98052  
425-822-3388



### Office Staff

Office Manager: [Terri Neely](#)  
Admin Assistant: [Diana Wagner](#)  
UniServ Rep: [Laura-Lee Barron](#)

**LWEA Officers and  
Executive Committee**

**President:**

[Howard Mawhinney](#)  
LWEA Office / 425-822-  
3388

**Vice President:**

[Katie Badger](#)  
LWEA Office / 425-822-  
3388

**Primary Rep:**

[Patti Cook](#)  
Rush / 425-936-2690

**Intermediate Rep:**

[Mary Kay Weinmeister](#)  
Rockwell / 425-936-2670

**Middle School Rep:**

[Kyla Thompson](#)  
Finn Hill / 425-936-2340

**High School Rep:**

[Rachelle Horner](#)  
EHS / 425-936-1500

**Specialists Rep:**

[Marilyn Hargraves](#)  
LWHS / 425-936-1700

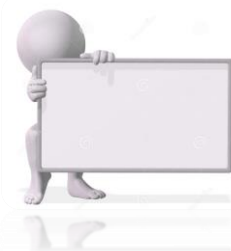
**Special Services Rep:**

[Cookie Grant-Suggs](#)  
Rush / 425-936-2690

**Ethnic Minority Rep:**

[Cathey Hettinger](#)  
Barton / 425-936-2480

**LWEA -  
this is your union!**



**We're excited to announce that registration for the 2021 NEA ESP National Conference is now open!**

The NEA ESP National Conference is the premier professional development opportunity for education support professionals across the nation. **The 2021 conference will be held virtually March 19-21, with a special ESP of the Year celebration on Friday, March 26.** Get ready to connect, collaborate, and engage in some of the most important topics affecting our school communities today, from racial and social justice, to trauma, social and emotional learning, leadership, organizing, and more! Check out the conference schedule, featured speakers, and workshop sessions at [nea.org/espconference](https://nea.org/espconference).

**Registration for conference is open from February 15-26, and is FREE of charge to NEA members. Space is limited, so spread the word and reserve your spot today!**

[Register now >](#)

## WEA Members Stories

WEA is looking to share educator voices and experiences as we continue navigating through the pandemic. Our experiences at work, whether virtual, in person, or a little bit of everything, are unique. We want to hear from members who are working on-site, as well as those who are or might be returning. Share with us a window into your world.

[We are taking videos via Flipgrid.](#) You can upload a video or record a response. (You must log in with a Goggle or Microsoft email to record a video.) Please keep your recording to a minute, and make sure you do not include students that can be identified. We are also taking written submissions. Please include a photo of yourself and email your story and photo to [WEA@WashingtonEA.org](mailto:WEA@WashingtonEA.org). Recording or writing, please include your name, your local and the name of your school or worksite.

WEA may choose to use your video/story on our website, on social media or elsewhere to uplift educator voices.



## Marketplace

Ads are run in the Update on a first come, first served basis. All ads must include a home email and/or phone number. Send directly to [Terri Neely](#) in the LWEA office.

All ads are subject to the approval of the LWEA Executive Committee and may be edited for length.



**Feb 18**

K-1 Return to In-Person

**Mar 1**

School Board Mtg

**Mar 2**

Exec Committee Mtg

**Mar 9**

Rep Assembly

**Mar 12**

Leap Day



## Missing A Friend and Colleague

Ira Jensen, long-time social studies teacher at Redmond Junior High, passed away peacefully at home on Friday, Feb. 5th. Ira was a three sport athlete and graduate of Lake Washington High School and began his teaching career at the old Redmond School at the bottom of Education Hill before moving to Redmond Junior High in the early 1960's. He retired around 1998. Mr. Jensen was very active coaching many sports at RJH, especially baseball. He was also very helpful to his fellow teachers each year. To quote one colleague of Ira's, "he was a fun, smart man who easily connected with all kinds of kids. He will be missed."

**You do not have to be retired to join WEA-Retired!** Benefits include flowing seamlessly from pre-retired to retired when the time comes, continues NEA Member benefits such as credit card and insurance programs, attorney referral program offering two free 30-minute consultations, and \$1,000,000 liability insurance if you choose to work as a substitute! There are also travel benefits, opportunities to get involved as an advocate for retired and current educators and our public-school students! WEA Retired also offers pre-retirement seminars and creates camaraderie! You can become a lifetime member with a one-time payment or break it down into smaller payments. It's never too early or too late to join WEA Retired! You can join at [www.washingtonea.org/retired](http://www.washingtonea.org/retired) or email [wearetired@washingtonea.org](mailto:wearetired@washingtonea.org) for more information. (Brigitte Tennis, WEA Retired Board Member, [tennissb@outlook.com](mailto:tennissb@outlook.com))

### FOR SALE:

**2003 VW Jetta 1.8 turbo:** \$3500 5 speed manual, sunroof, heated leather seats, 17 inch rims. Only 145,000 miles. Original owner; very clean and meticulously cared for. All maintenance records. You will not find a nicer Jetta at this price! Located in Sammamish, near Margaret Mead. For pictures contact Mark 425-466-8314 [mjensen2@comcast.net](mailto:mjensen2@comcast.net) (Sarah Jensen, Mead)

### FREE:

**Pool table and accessories:** 3 cues, set of balls and triangle – good condition. Free! For pictures contact: Sarah Jensen 425-941-4674 or [sajensen@comcast.net](mailto:sajensen@comcast.net)

