

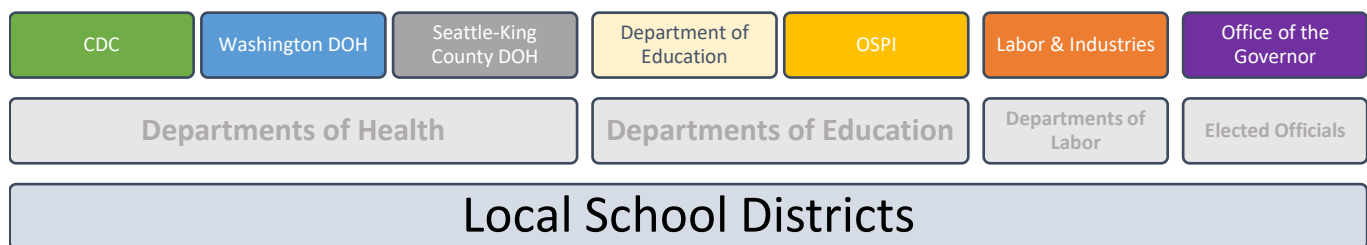


Update - Stay Connected

Schools Reopening for In-Person Instruction: Situation Update March 24, 2021

The issue of schools reopening for in-person instruction has continued to make headlines in our state and region, especially in the last month. Of course, our members know that our schools have been open all year, thanks to educators who figured out how to solve problems and ensure that despite the pandemic, kids are learning and connected to their schools and teachers. We want to ensure that members understand *who* makes decisions about *how* schools operate and *when* they might reopen for in-person instruction.

Ultimately, local school districts make decisions about how they operate their schools. In LWSD, our superintendent makes these decisions, with input and guidance from our school board. Decisions about *how* to operate schools are informed directly by OSPI, DOH, L&I, and tangentially by the elected officials.



In Washington State, a number of agencies direct and inform how a school district operates – both as a public agency and as an employer. During COVID, schools have had to meet the **health requirements** for both students and employees by DOH and L&I; the **educational requirements** set forth by OSPI; and any **directives or prohibitions** contained in Proclamations, Directives, or Executive Orders issued by the Governor.

- CDC** provides guidance, recommendations, and strategies for the safe operation of schools during COVID.
 - Additionally, CDC provides advice on a wide range of topics related to health, workplace safety, wellness, disease, emergency preparedness, etc. CDC guidance informs our state DOH agencies, but CDC does not set health policy or rules in our state.
- Washington DOH** provides direct guidance and health requirements to K-12 schools in Washington.
 - DOH guidance informs and directs local decisions about **how** to operate schools and **if/when** to resume in-person instruction. DOH reviews CDC guidance and makes decisions about how that guidance will be applied in Washington. Local school districts use DOH guidance when making operational decisions about how to operate schools.
- SKC DOH** supports guidance, recommendations, and requirements made by DOH and OSPI.
 - Local health departments can order schools to close if they are unable to reduce the risk of in-school transmission of disease. SKC DOH supports recommendations made by DOH and OSPI, and they meet with local superintendents to advise their operational decisions.
- OSPI** supervises and manages public education in Washington.
 - OSPI sets policy, allocates funding, and provides tools, resources, guidance to schools so that they can meet any requirements set forth in law. During COVID, OSPI has required that schools meet DOH requirements on health and safety, L&I requirements for worksite employee health and safety, and key state laws related to educating students.
- L&I** manages health and safety of workplaces in Washington.
 - Labor & Industries enforces labor laws and rules that protect workers, helps employers implement safety standards, and manages the workers' compensation system.
- Office of the Governor**
 - A governor can issue directives, proclamations, and executive orders, all of which require certain actions be taken or conditions be implemented. Executive orders can be treated like law, while proclamations are often related to states of emergency.



Physical Distancing: 3 feet or 6 feet?

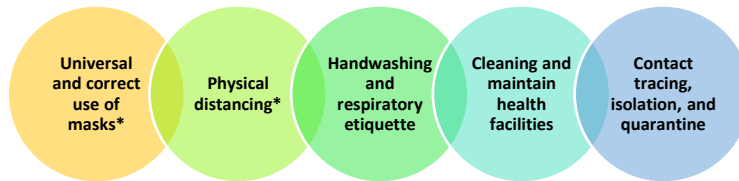
Recently the [CDC recommended](#) that schools may reduce distancing between students in classrooms from 6 feet to 3 feet in certain situations.

CDC guidance is a recommendation only, not a mandate. Washington's DOH reviews CDC guidance before making recommendations or setting requirements for our state. DOH provides direct guidance on health and safety to K-12 schools.

The CDC recommendation is based on a few key factors:

1. Evidence suggests that K-12 schools can operate safely in-person when they **consistently implement several key prevention strategies** to reduce the transmission of COVID in schools.
2. Schools should use a **layered approach** to implementing these key prevention strategies.
3. **Levels of community transmission** of COVID should inform both if/when schools should operate in-person and how to implement key prevention strategies.

Key prevention strategies that should be implemented in a layered approach at schools:



CDC Recommendations for Prevention Strategies in K-12 Schools by Level of Community Transmission

→ Wondering what the Level of Transmission of COVID is in King County? [View CDC's COVID data tracker.](#)

Level of Community Transmission:	Low	Moderate	Substantial	High
Total new cases per 100,000 persons in the past 7 days:	0-9	10-49	50-99	≥100
Percentage of nucleic acid amplification tests that are positive during the past 7 days:	<5.0%	5.0%-7.9%	8.0%-9.9%	≥10.0%
Physical Distancing in: Elementary classrooms	At least 3 feet between students.		At least 3 feet of distance between students. • Cohorting recommended when possible.	
Middle/High School classrooms	At least 3 feet between students.		At least 3 feet of distance between students. • Cohorting recommended when possible.	At least 3 feet of distance between students in schools that can use cohorting. At least 6 feet distance between students in schools that cannot use cohorting.
At all times in schools	At least 6 feet between adults, and between adults and students.			
In all classrooms or situations	At least 6 feet between students: • when masks cannot be worn, such as when eating. • during activities of increased exhalation (singing, shouting, band, or sports/exercise). • When in common areas such as lobbies, auditoriums, and hallways.			

LWEA Officers and Executive Committee

President:

[Howard Mawhinney](#)
LWEA Office / 425-822-3388

Vice President:

[Katie Badger](#)
LWEA Office / 425-822-3388

Primary Rep:

[Patti Cook](#)
Rush / 425-936-2690

Intermediate Rep:

[Mary Kay Weinmeister](#)
Rockwell / 425-936-2670

Middle School Rep:

[Kyla Thompson](#)
Finn Hill / 425-936-2340

High School Rep:

[Rachelle Horner](#)
EHS / 425-936-1500

Specialists Rep:

[Marilyn Hargraves](#)
LWHS / 425-936-1700

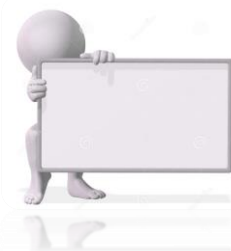
Special Services Rep:

[Cookie Grant-Suggs](#)
Rush / 425-936-2690

Ethnic Minority Rep:

[Cathey Hettinger](#)
Barton / 425-936-2480

**LWEA -
this is your union!**



UBenefit Grants

NEA is excited to bring the UBenefit program to Washington Education Association Members!

They will be providing 50 \$100 UBenefit grants. This is just a small way to say “thank you” and give back to members that often reach into their own pockets to support their schools, students and classrooms.

What is it?

UBenefit –

The UBenefit Grant Program by Security Benefit (provider of the NEA Retirement Program) was designed to help teachers and support professionals offset their use of personal funds to support students and their classrooms.

- The NEA Retirement Program is offering (50) \$100 Grants for Washington Education Association Members.
- Members can enter to win one of the grants at www.UBenefit.org.
- Deadline for submissions is April 30, 2021.

WEA Professional Development Opportunities

WEA’s Special Education Support Center (SESC) and Inclusionary Practices Project (IPP) are offering courses online, in real-time, via Zoom, in addition to asynchronous Canvas courses. They have launched the April – June 2021 quarterly Zoom schedule! Attached are the event flyers.

Highlights:

- Special PD Event: Universal Design for Learning with Katie Novak, Ed. D.
- New Coaching and Mentoring Series
- New MTSS Series
- New Paraeducator Series
- New Parents’ Perspective Course
- New STEM Zoom Courses
- Asynchronous Courses – via Canvas

[Registration is open.](#) Select your event/course in the drop down menu on the top of the registration page. (Asynchronous courses have their own registration links, see Canvas Course flyer.) Clock hours are available. Courses/Clock hours are free. You can access flyers with our current schedule/offerings for both asynchronous and synchronous courses here: <https://bit.ly/WEA-IPP> or click on the links below:

[Coaching and Mentoring Series](#) [Zoom Courses April-June 2021](#)
[Asynchronous Courses via Canvas](#) [Special PD Event: Universal Design for Learning](#)

Marketplace

Ads are run in the Update on a first come, first served basis. All ads must include a home email and/or phone number. Send directly to [Terri Neely](#) in the LWEA office.

All ads are subject to the approval of the LWEA Executive Committee and may be edited for length.



Mar 30
Mock Rep Assembly

April 4
Easter



April 5-11
Spring Break

Apr 13
Exec Committee

Apr 15-17
WEA Rep Assembly

Spring

A Friend in Need



Christine Winterbrook - K5HC Team Member in Accelerated Programs – Supports Rosa Parks Elementary and Sandburg/Discovery Elementary School Highly Capable Students. Christine is currently undergoing chemotherapy and recovering from radiation therapy for Stage IV metastatic non-small cell lung cancer with the EGFR mutation which is a non-smoker's form of lung cancer. Her treatment was delayed in March because she was hospitalized and went into kidney failure after her first round of chemotherapy. With a modified treatment plan she is continuing to undergo chemotherapy while being closely monitored in case of a recurrence of kidney failure due to treatment. **She appreciates the donations of shared leave that she has currently received but, due to the set back of treatment, is in need of additional donations.**

Please consider a [Shared Leave Donation](#) by filling out the donation form and sending it to HR. Thank you.

Non-profit, STEM-IB Summer Program Teacher Position

I oversee the non-profit STEM programming of the National Inventors Hall of Fame that is led by local educators for Washington state. We are seeking a new site leader for our Sammamish area [Camp Invention](#) program and several teachers recommended the LWEA publication to see if you'd be open to putting a blurb in there for us.

With Summer Recovery learning being at the forefront focus right now, we are thrilled to have a strong solution as our summer program is inquiry-based and fosters collaboration and innovation mindset through cross-cutting content that aligns to Common Core, NGSS and CASEL standards. See attached for additional information.

The National Inventors Hall of Fame is seeking a teacher for the Sammamish area one-week blended summer, IB/PBL STEM, non-profit program to serve as the site leader. For additional information on the program see: <https://www.invent.org/programs/camp-invention>. To learn more about the site director role and compensation, contact Annette Phillips at aphillips@invent.org.

Today, do one little thing to
take better care of yourself

...then repeat tomorrow