



Update - Stay Connected

June 9, 2021



Join LWEA in saying Farewell to several of our Executive Committee members as they journey down another path in their lives. They have worked countless hours raising the voices of their colleagues.

Kyla Thompson Jackson, MS Rep, **Rachelle Horner**, HS Rep, and **Mary Kay Weinmeister**, Intermediate Rep are all remaining in LWSD in new roles. Their dedication to their colleagues on the LWEA Exec Committee will be missed. *“Thank you ALL for your contribution to your union, your colleagues, your students and your profession.”* We wish them the best. You are all fabulous.

After 40+ years in education, **Marilyn Hargraves**, is Retiring!! As a Counselor, Specialist Rep, NEA and WEA Delegate, Bargaining Team member, Building Rep, and Benefit Advisory Board Rep, her roles and impact have been many and far reaching. Marilyn’s dedication to every colleague and student will be greatly missed but not more so than her charming, upbeat personality and ever-present sense of humor and smile 😊

We Love You Marilyn



You Are the Best!

CONGRATULATIONS, Marilyn!

Thank you for being a part of executive committee and all of the other work you do! You have been a mentor, friend, and great advocate for all LWEA members! I have learned a lot from you and I will miss your humor, dedication and words of wisdom! Enjoy retirement to its fullest!! Gerry


“Marilyn always looked at problem solving issues from a variety of angles. She was always supportive of her students and staff.” Sarah Cooper

“Marilyn has been a friend and a mentor. She is someone to look up to. She is an inspiration.”

“Marilyn is always there with words of encouragement, a positive attitude, and smile”

“She always has a smile for everyone and her sense of humor/wit are so appreciated!!”

End of Year Checklist 2021

- ✓ **Stay informed:** we will be communicating important information with members over the summer.
 - **June 22:** We will be holding a General Membership meeting to review our CBA bargaining progress and hopefully review a Tentative Agreement. An invite for that meeting will be sent only to home emails.
 - **Do we have your home email and phone number?** If not, please share it with us: [Home Contact Info](#)
- ✓ **Check your pay:** we negotiated several additional compensation components this year. Please review the [June 2nd Update article](#) with information on how to check that you've received the compensation you are owed.
- ✓ **By June 11:** Sign and return your [21-22 contract electronically in Employee Access](#).
 - Information was emailed to your work account from Human Resources on 5/28
 - Take a screen capture of your completed signed contracts as an extra and optional precaution using the snipping tool. 
- ✓ **By June 11:** Receive and review your final summative [evaluation](#).
- ✓ **By June 16:** Secondary grades due.
- ✓ **By June 16:** Pack up your room for the summer and complete the checkout process at your building. Be sure to follow all safety protocols. *If you unable to come onsite to complete the end-of-year checkout, please work with your building admin on a safe way to complete this annual process.*
- ✓ **By June 15 and 16:** Complete end-of-year technology tasks:
 - **By June 15:** [Archive PSL](#)
 - Teams: [End-of-year procedures](#), [Backing up content](#)
 - [End-of-year technology reminders](#) for staff
- ✓ **If you are leaving the district,** review [section 10.16 of the CBA](#) for dates and notification responsibilities.
- ✓ **By June 30:** Complete the Annual Leave Carry Over Survey. We signed a [letter of understanding](#) with the district that allows you to accumulate up to 45 hours of personal leave for the 21-22 school year. Review the email sent to your work email from AskPayroll@lwsd.org on 5/27
- ✓ **Elect building reps** for next year (or do this during August LEAP). Check with your building rep for details.



By June 17: enjoy your summer break. June 16 is your last day of work for this school year.

LWEA
8575 164th Ave NE
Suite 100
Redmond WA 98052
425-822-3388



Office Staff
Office Manager: [Terri Neely](#)
Admin Assistant: [Diana Wagner](#)
UniServ Rep: [Laura-Lee Barron](#)

LWEA Officers and Executive Committee

President:

[Howard Mawhinney](#)
LWEA Office / 425-822-3388

Vice President:

[Katie Badger](#)
LWEA Office / 425-822-3388

Primary Rep:

[Patti Cook](#)
Rush / 425-936-2690

Intermediate Rep:

[Mary Kay Weinmeister](#)
Rockwell / 425-936-2670

Middle School Rep:

[Kyla Thompson](#)
Finn Hill / 425-936-2340

High School Rep:

[Rachelle Horner](#)
EHS / 425-936-1500

Specialists Rep:

[Marilyn Hargraves](#)
LWHS / 425-936-1700

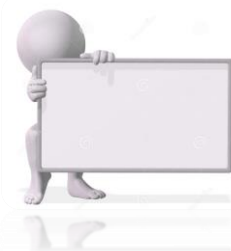
Special Services Rep:

[Cookie Grant-Suggs](#)
Rush / 425-936-2690

Ethnic Minority Rep:

[Cathy Hettinger](#)
Barton / 425-936-2480

**LWEA -
this is your union!**



Election Results Are In

Congratulations to **Sharon Curry**, HS Representative and **Hattie Midboe**, MS Representative. They will serve on the Executive Committee as your reps for the 2021-22 school year.

DID YOU SIGN YOUR CONTRACT? Certificated Contracts for 2021-2022

Human Resources will continue to utilize Employee Access to electronically disseminate, accept, and retain certificated employment contracts for the 2021-2022 school year. Begun last year, this process has eliminated the need for manually signing and returning paper contracts. As such, contracts are no longer sent via email as was the practice in previous years. Instead, all certificated staff will be provided information on how to access their 2021-2022 contracts using Employee Access and to acknowledge acceptance with an electronic signature.

Contract will be available through Employee Access beginning Friday, May 28. Complete instructions of how to view and accept certificated contracts will be emailed to all certificated staff this Friday, May 28. **The window to electronically sign 2021-2022 contracts is Friday, May 28 through Friday, June 11, 2021. This Friday!**

Long Term Care Tax Beginning January 2022

In 2019, Washington was the first state to establish a long-term services and support trust to provide a maximum lifetime benefit for Washington residents who have paid into the trust for a set period of time. See more info in [Update 5-26-21](#) and [Update 6-2-21](#)

Some options for obtaining private LTC insurance:

NEA Member Benefits

- **Long Term Care Insurance (LTCI) Partners** – trusted partnership for over 10 years
- Offers a marketplace of insurance providers (Currently 10 companies all rated “A” or better)
- Program is open to members and their families: spouse/partners, parents, grandparents, adult children (including in-laws)
- To begin, visit their website: www.ltcipartners.com/wea/nea

LWSD Partners

- **American Fidelity** offers private insurance and provides assistance with navigating the changes and understanding your benefit options
- To schedule an appointment, please go to <https://enroll.americanfidelity.com/9942793D> or call American Fidelity at 866-576-0201
- **Unum LTC Insurance** currently offered through district. For a self-service option, the district currently offers Unum LTC insurance on the [Staff Portal](#). Click [Unum Long Term Care \(unuminfo.com\)](#) to be directed to Unum’s self-serve website.
- If you have questions for the district, email SEBBbenefits@lwsd.org

Marketplace

Ads are run in the Update on a first come, first served basis. All ads must include a home email and/or phone number. Send directly to [Terri Neely](#) in the LWEA office.

All ads are subject to the approval of the LWEA Executive Committee and may be edited for length.



June 15
Rep Assembly

June 22
9:00am EC Mtg
Noon: Rep Assembly
4:00pm: General Membership Mtg

SUMMER!!

Enjoy, stay
healthy and
Be Safe



SAGA Spring Gathering

Join your SAGA friends to celebrate the end of this crazy year! June 7th, 4:30-5:30 See flyer for more details and RSVP contact. [Saga Spring Gathering June 7](#)

Final Newbie Night 2020-21

At the final NN of the 2020-21 SY, we will reflect on the past year: teaching during Covid, finishing strong and what you can leave behind. Join us June 10, 4:30-6:00 See [NN Reflection](#) for more information and how to RSVP.

Sprouts of Wonder

Child care for 24months – 6yrs by an experienced, licensed and Aid/CPR trained staff. Fun, learning and bilingual environment.

[Sprouts of Wonder - Family Child Care](#)

Now Enrolling!
24months-6yrs old

Over 15 years experience in Early Learning, 1st Aid/CPR trained, Licensed and AA in Early Childhood Education.

Music & movement
Language
Arts & Crafts
Reading
Private playground

10927 158th Ct NE
Redmond, WA, 98053
Janeth Orozco
(425) 503-4848
M-F 9AM-5PM

SPROUTS OF WONDER
FAMILY CHILD CARE

We provide a fun and learning environment with opportunities for growth and development. Activities are developmentally appropriate and based on children's interests and needs.

Bilingual Environment!
Spanish/English
Janethorozco2@hotmail.com

Looking for a new roommate to move into my current apartment on July 1! I live in a wonderful 2 bed/1 bath apartment in the Phinney Ridge neighborhood in Seattle. The apartment has laundry in unit, a parking space, and an incredible view of the Olympics! I also have an Australian Cattle Dog who just turned 1 year old (must be dog friendly but unfortunately we cannot accept any other pets)! Rent: \$975/month plus utilities.

Reach out by email: katycrites@gmail.com