

FOLLOW US!

Facebook: [Lake Washington Education Association](#)

IG: [lweaeducators](#)



Update - stay connected

www.lakewashingtonea.org

June 21, 2023



End of Year Checklist 2023

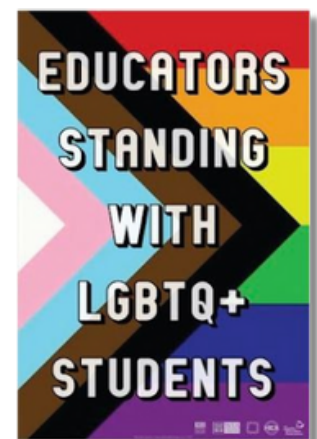
- ✓ **Elect building reps** for next year. Check with your current building reps for details.
- ✓ **By June 23:** Secondary grades due.
- ✓ **By June 23:** Pack up your room for the summer and complete the checkout process, including [end-of-year technology tasks](#).
- ✓ **If you are leaving the district,** review [section 10.16 of the CBA](#) for dates and notification responsibilities.
- ✓ **By June 30:** Complete the Annual Leave Carry Over Survey. ([see pg.4 of 6/15 Update](#))



Interested in marching in the Seattle Pride Parade?

The Seattle Pride Parade is on Sunday, June 25, and the WEA LGBTQ+ Caucus is organizing members, students, family members, WEA staff, pro-union, and pro-public education friends and allies from across the state to march as a Washington Education Association contingent.

[Check out this link to learn more and RSVP.](#)



Enjoy your summer break!

LWEA Officers and Executive Committee

President:

[Howard Mawhinney](#)

LWEA / 425-822-3388

Vice President:

[Katie Badger](#)

LWEA / 425-822-3388

Primary Rep:

[Patti Cook](#)

Rush / 425-936-2690

Intermediate Rep:

[Fareeha Nasir](#)

Alcott / 425-936-2490

Middle School Rep:

[Hattie Midboe](#)

Stella / 425-936-2475

High School Rep:

[Bethany Shoda](#)

LWHS / 425-936-1700

Specialists Rep:

[Nikole Lalas](#)

RHS / 425-936-1800

Special Services Rep:

[Karyn Taggart](#)

KaMS/ 425-936-2400

Ethnic Minority Rep:

[Michael Finley](#)

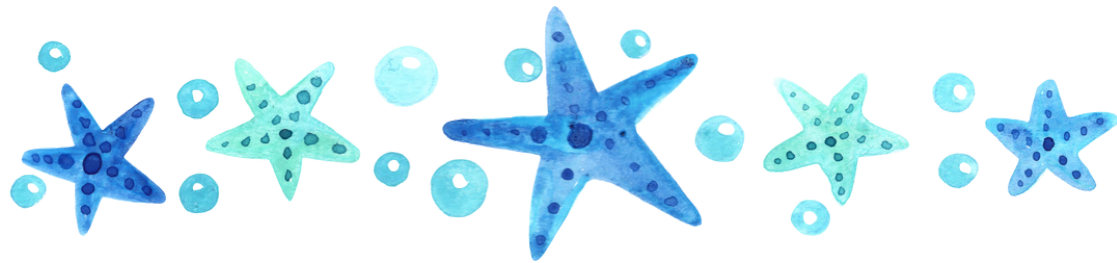
RHS/ 425-936-1800



2023-24 LWEA HS Rep Executive Committee



She will serve as the HS Rep on the
2023-24 Executive Committee

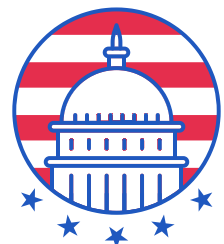


Legislative Scholars Program

The Legislative Scholar Program provides teachers from across Washington with an opportunity to learn firsthand about the state's legislative process. The program is open to elementary, middle, and high school teachers, as well as paraeducators, and those pursuing their teaching degree. Registration for the [Legislative Scholars Program](#) is now open. The goal is to provide educators with resources, lesson plans, and foster a deeper understanding of state government while earning free clock hours.

The program will be held from July 17th-21st with the first four days being virtual, and an optional fifth in-person day. As we adjusted to a virtual format the last few years, we saw a significant uptick in participation. We hope that continuing to provide online and in-person options allows for greater accessibility.

Leo O'Leary
Civic Education Director
WA State House of Representatives



Family Connection Conferences and Kindergarten Staggered Start for 2023-24 SY

Kindergarten Clarification



While the 2023-24 calendar was set in the previous bargain, the LWSD and LWEA agreed to adjust the calendar to provide Elementary Family Connection Conferences and a staggered start for kindergarten students beginning in the fall of the 2023- 24 school year. The Family Connection Conferences will replace the October student-involved conferences and will be very similar to the Family Connection Conferences we held in fall of 2020. Students may attend with their parents.

- Students in grades 1-5 will attend school for a half-day to accommodate individual Family Connection Conferences for all students the second half of the day
- Kindergarten students will not attend school the first three days of school. Kindergarten will still have 3 full days of Family Connection meetings on Days 1, 2 & 3. Days 4 & 5 Kindergarten students will have staggered start.



Children's Tumor Foundation Summer Walkathon

Shine your light





SHINE A
LIGHT
NF WALK



1 IN 3000 THERE IS
BIRTHS HAS NF NO CURE
A GENETIC DISORDER THAT CAUSES TUMORS TO GROW ON NERVES BUT YOU CAN HELP



SEP
10
2023

WALK TO END NF AT THE
SEATTLE
SHINE A LIGHT NF WALK

WARREN MAGNUSON PARK (SHELTER 2)
6505 NE 65TH ST, SEATTLE, WA 98115

REGISTER TODAY AT SHINEALIGHTWALK.ORG/SEATTLE2023



CHILDREN'S
TUMOR
FOUNDATION
ENDING NF
THROUGH RESEARCH

SUNDAY, SEPTEMBER 10TH
10:00 A.M. Registration 11:00 A.M. Walk
FOR QUESTIONS AND MORE INFO CONTACT:
Lauren Johnston at ljohnston@ctf.org
or 470-349-4823

Register Now!



OFFICE STAFF

Office Manager: Terri Neely
Field Assistant: Diana Wagner
UniServe Rep: Nani Lium

8575 164th Ave NE
Suite 100
Redmond, WA 98052



Marketplace

Ads are run in the Update on a first come, first served basis. All ads must include a home email and/or phone number. Send directly to **Terri Neely** in the LWEA office.



JUNE 21

First Day of Summer



JUNE 23

Last day of School



Keep LWEA Strong - Get Involved

Are you interested in keeping LWEA strong? **WE NEED YOUR HELP.** Consider joining one of our Competency Teams. The Organizing and Communications team works to strengthen relationships with members through social media, helping our building reps and members build power within their school, and welcoming new members to LWEA. The Business and Finance team works closely with the LWEA budget, reviews and approves requests for funds, runs elections, and participates in the CBA process. The Advocacy and Leadership team plays a huge role in the Equity programs such as EoC, SAGA, and Equity conference planning as well as Whispers of Wisdom, professional development course offerings and political action groups. There is something for everyone!

Join us! If you are interested in becoming involved, send an email to asklwea@washingtonea.org



MONEY MINUTE



WA Cares Act – Long Term Care – Starts July 2023

The WA Cares Act, passed by the legislature, mandates long term care benefits for Washington state residents, which will be funded by premiums collected from employee's wages. Beginning in July 2023, employers must deduct 0.58% (or \$0.58 per \$100) of employees' wages to fund the new State Long Term Care Program. The first payroll deduction for Long Term Care will be applied on the July 31st paycheck.

Beginning in July 2026, each person who is eligible to receive the benefit can access services and support costing up to \$36,500 (maximum lifetime benefit). To be eligible to receive the benefit you must meet certain qualifications. To learn more about the contributions, benefits, eligibility and timelines, please visit: [WA Cares Fund](https://www.wa-cares-fund.org).

Employees who have private long term care insurance plans established before November 1, 2021, had a one-time opportunity to apply for a lifetime exemption from this payroll tax. Exemptions must have been applied for between October 1, 2021, and December 31, 2022.

If you are new to the district and have an exemption letter, please email a copy to Shelly Fanning at sfanning@lwsd.org to ensure that your exemption is applied. If you turned in your exemption letter prior to July 15, 2023, you do not need to resubmit your letter.